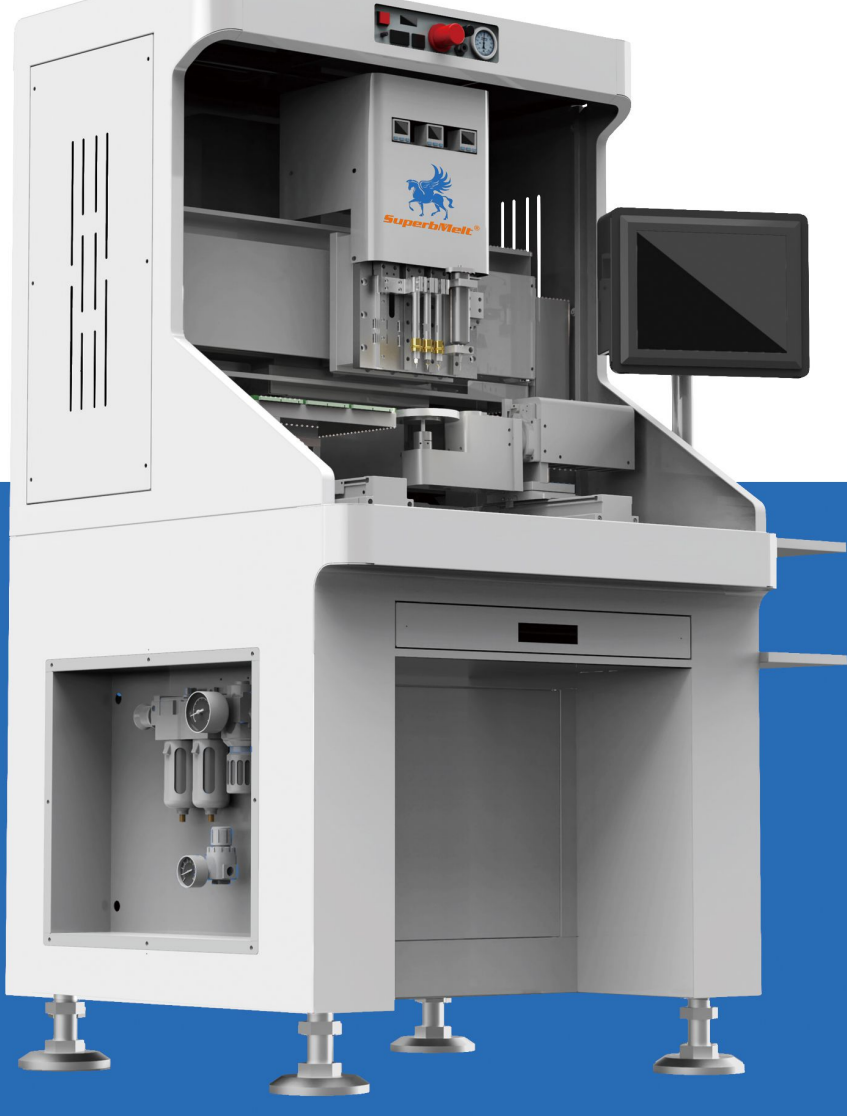
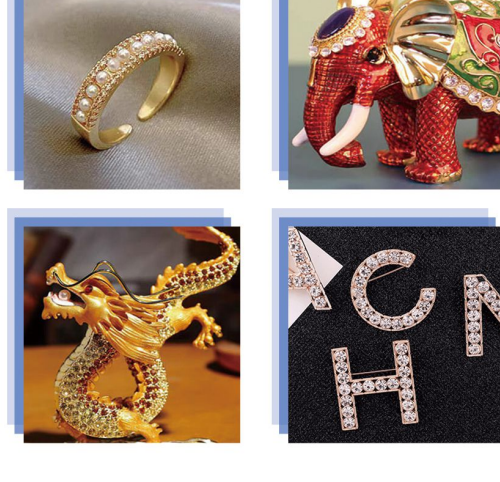


# STONE AUTOMATIC GLUE DISPENSING AND SETTING MACHINE

ONE MACHINE DO 10 WORKERS' JOB



www.superbmelt.com



## 6 CORE ADVANTAGES

INTELLIGENCE STABLE EFFICIENT



**Integrated Glue Dispensing Stone Setting**

Will not damage the mold



**It won't miss any stones the stones won't be misaligned.**

The finished product will not fall off



**High Efficiency**

8000-11000/h



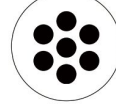
**Accurate And Stable**

Wax Protection



**Teach Fast**

One-hour quick teaching



**Multi colors and sizes**

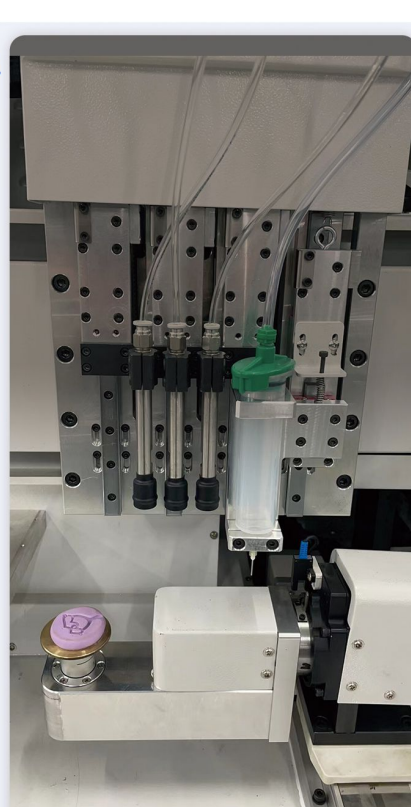
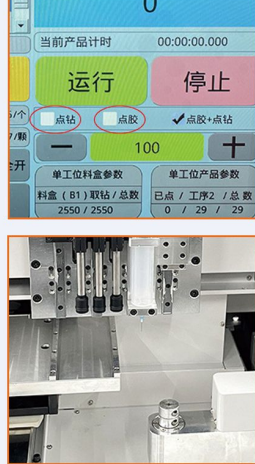
Enrich Jewelry Designs

SUPERBMELT.COM

## - Advantages -

### 1ST A MACHINE THAT INTEGRATES GLUE DISPENSING AND STONE SETTING.

- One machine handles both glue dispensing and stone setting processes simultaneously, and it can also independently perform wax setting. This machine is suitable for various jewelry, hardware, and craft applications involving glue dispensing and stone setting.



### 2ND FIVE-AXIS LINKAGE.

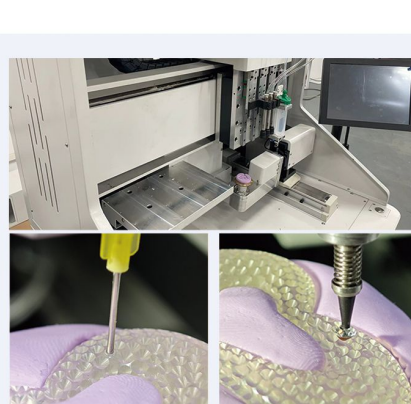
- Five-axis linkage worktable with 360-degree unlimited rotation supports flat, three-dimensional, large-angle, and large-curve designs.



SUPERBMELT.COM

### 3RD PRECISION AND STABILITY

- High-precision dispensing and drilling, without damaging the product. The drilling path is precise, the landing points are accurate, and the output is stable.



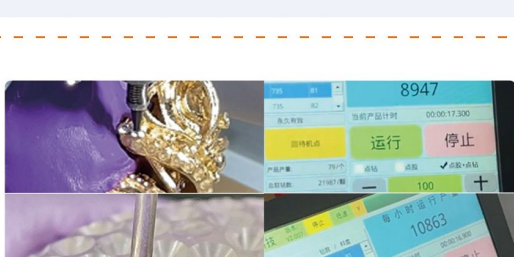
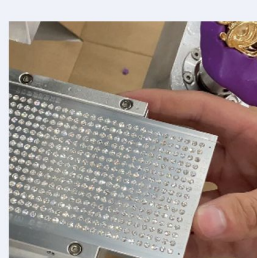
It won't miss any stones, and the stones won't be misaligned.

### 4TH INTELLIGENT RECOGNITION

- Intelligent recognition system: automatically identifies empty drills, skips empty drills, and automatically fills missed drills.

### 5TH EASY TO OPERATE

- Material replacement and start-up are simplified into two easy steps, making the operation simple and user-friendly, allowing even beginners to master it effortlessly.



Gluing and stone setting: 8,000-11,000 pieces per hour.

### 6TH HIGH EFFICIENCY

- First apply glue, then set stones. Fast switching between gluing and stone setting, with a speed of 8,000-11,000 pieces per hour.

WWW.SUPERBMELT.COM

## THE PARAMETER

Equipment name:	Stone Automatic Glue Dispensing and Setting Machine
Equipment model:	SPB-5DZ3-1
Workbench structure:	Flat Dual Workbench and Dual Rotational Axis Structure
Dispensing Speed:	20,000-21,000/hour
Stone Setting Speed:	9,000-12,000/hour
Suction Nozzle Quantity:	3 Suction Heads, 1 Glue Dispensing Head
Diamond Plate Fixing Method:	Spring-loaded Screws on the Upper Side of the Platform
Diamond Setting Accuracy:	±0.02mm
Control System:	Industrial-grade Five-axis Motion Controller
Main Operating System:	SuperbMelt Self-Developed
Drive System:	High-End Servo
Transmission Method:	High-Precision Ball Screw Guide Rail
XYZ/A/C Effective Travel:	550/150/110mm / +150° -90° / 360°
Power Supply:	AC220V/50Hz
Working Air Pressure:	80psi(0.4Mpa)
Dimensions:	Length 780mm * Width 730mm * Height 1430mm
Equipment Weight:	About 450KG
Rated Power:	1.3kw

## Superb Electromachinery Co., Limited

Add: No. 55 Anhua Road, Anliang Village, Henggang Town, Longgang District, Shenzhen City, China.

Tel: 0086-755-28838424

Fax: 0086-755-28883730

Whatsapp: +8618857719978

E-mail: sales@superbmelt.com